



RICE

**Fondren Library**  
**Digital Media Commons**

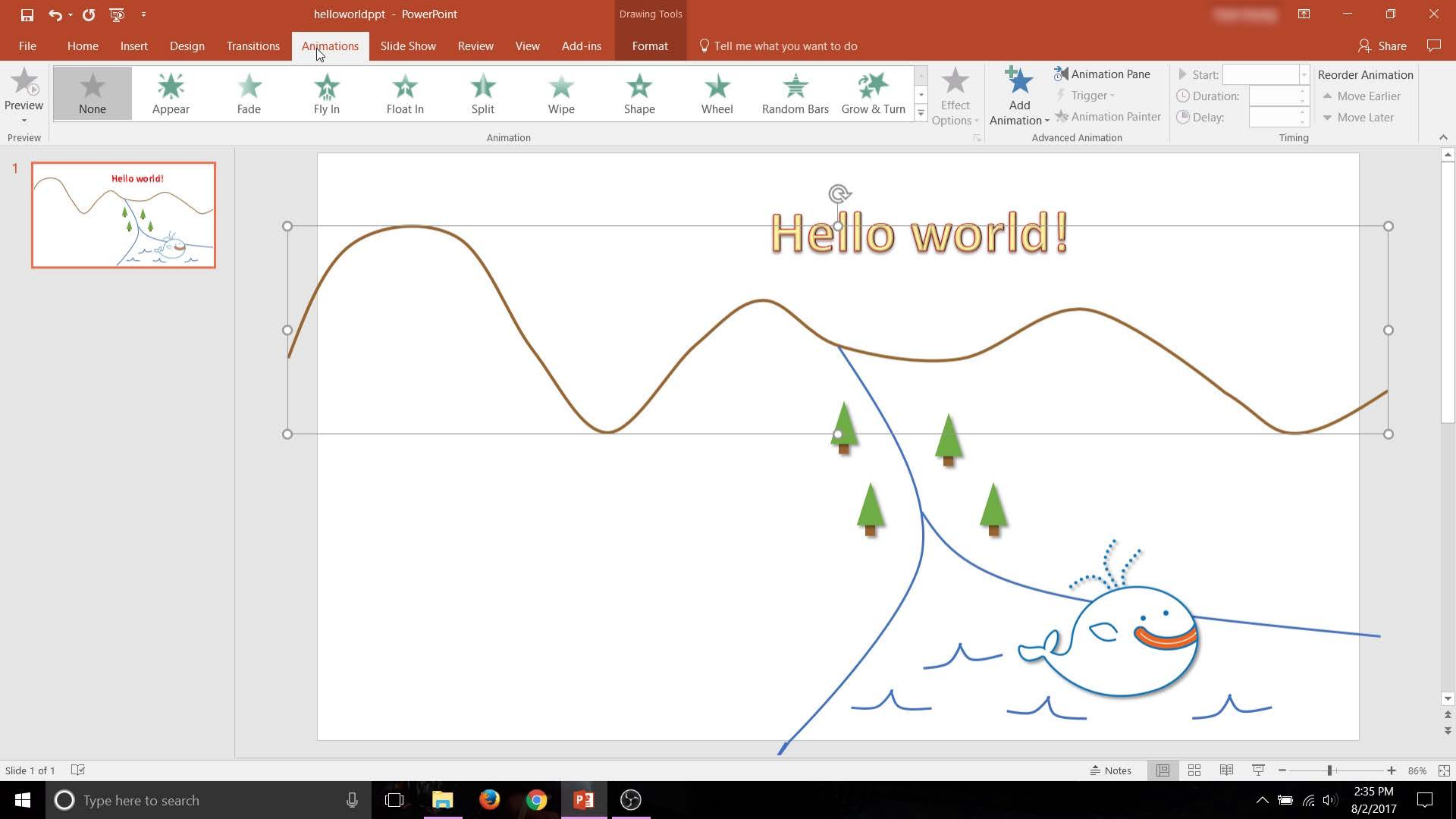
# How to Create a PowerPoint Animation

Digital Media Commons

Fondren Library B42

[dmc.rice.edu](http://dmc.rice.edu)

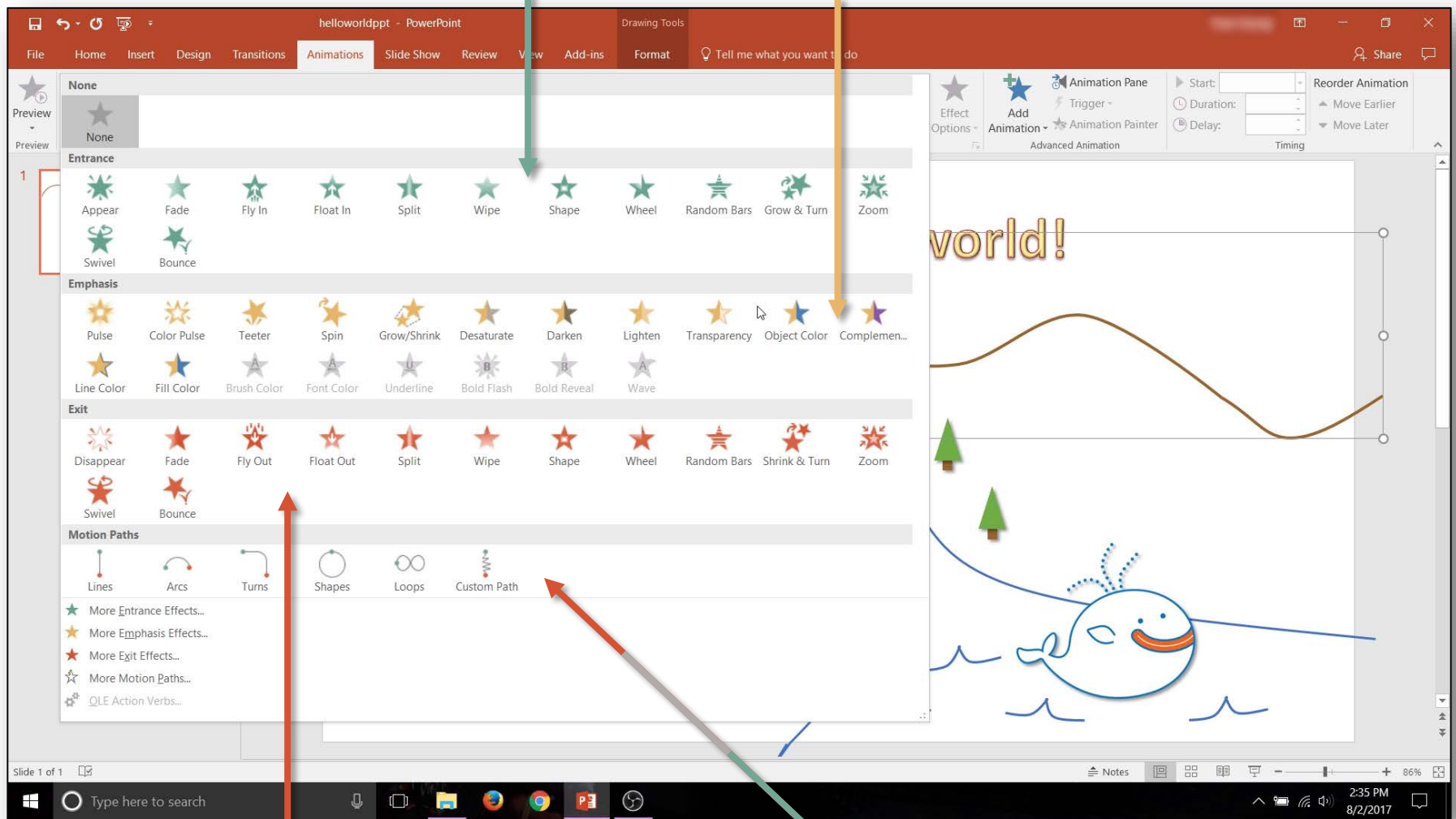
[dmc-info@rice.edu](mailto:dmc-info@rice.edu) | (713) 348-3635



1. Select the "mountain line" on the slide.
2. Go to the animation tab.

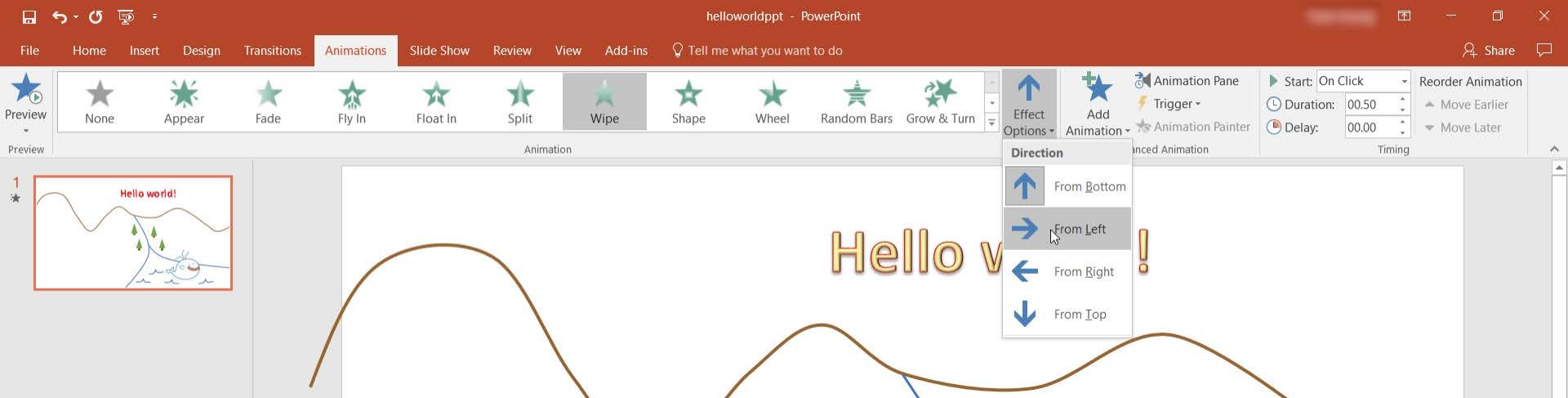
**Entrance animations** occur when an object enters the scene

**Emphasis animations** occur while the object is in the scene



**Exit animations** occur when an object leaves the scene

**Motion paths** are custom paths you make for an object to follow

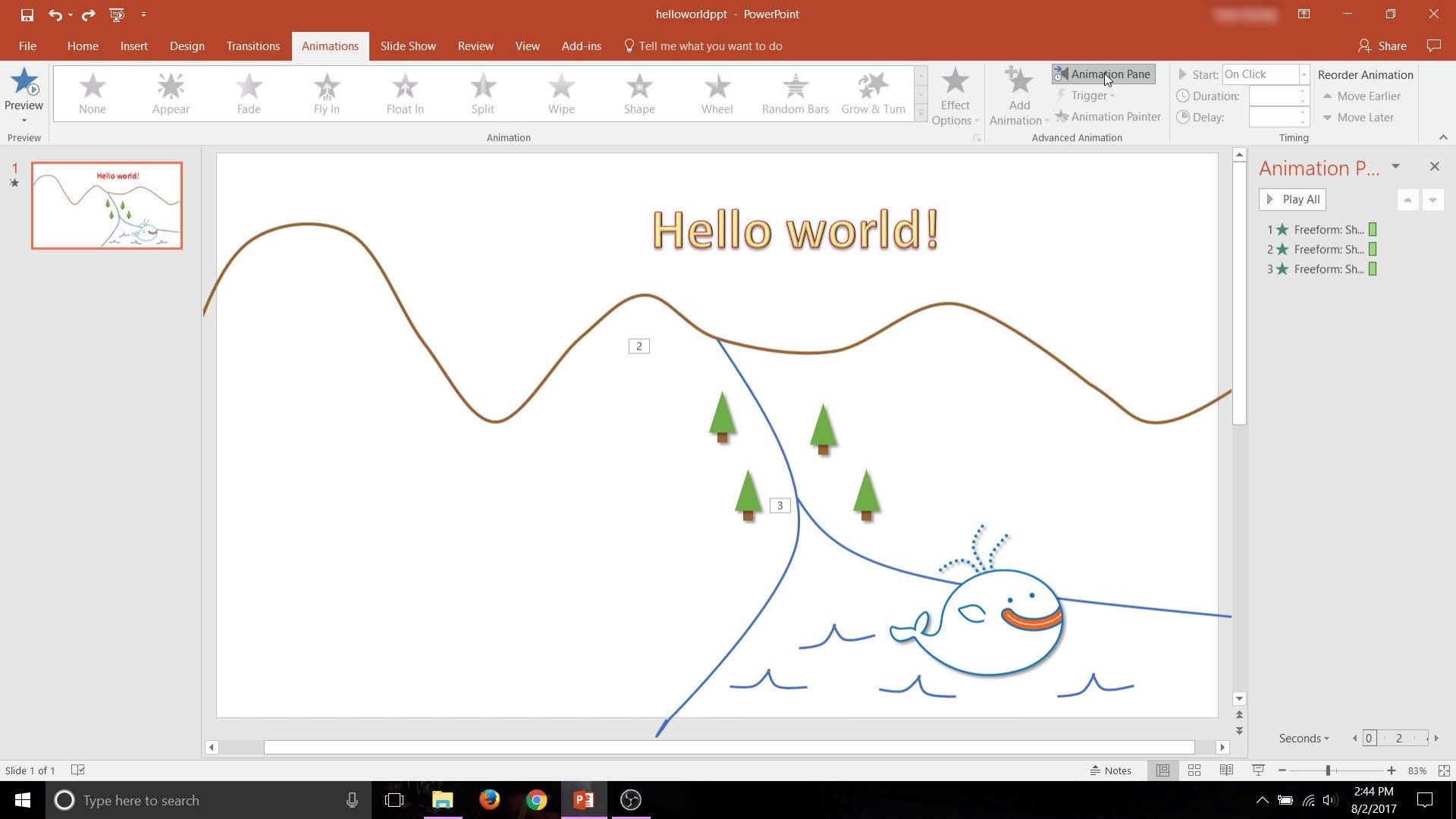


1. Add the "Wipe" animation to the mountain line
2. Change effect options to "From Left"
3. Add the Wipe animation to both river lines
4. Change the effect options for both rivers to "From Top"

The directional wipes will create the illusion of the lines being drawn on!

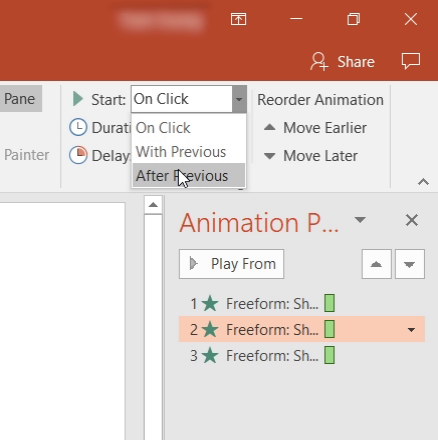
Different animations will have different effect options.

Experiment with different effects!

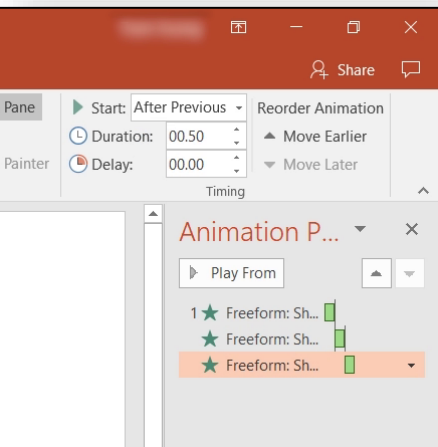


1. Open the animation pane

The animation pane is where you can see all the animations on the current slide AND what order they appear in.

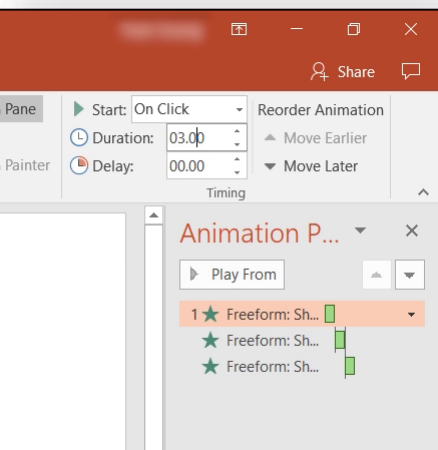


1. Click the second animation
2. In the Start dropdown menu, change the start cue from "On Click" to "After Previous"



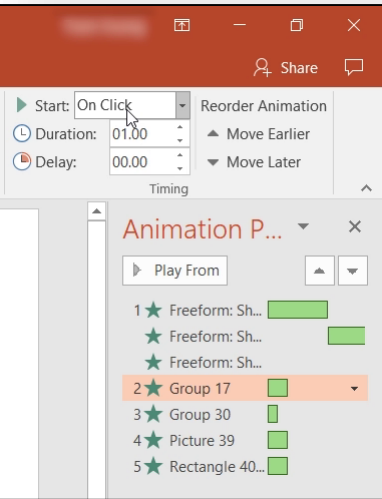
3. Do the same for the third animation

Changing these settings makes the animations start automatically after the previous one finishes.

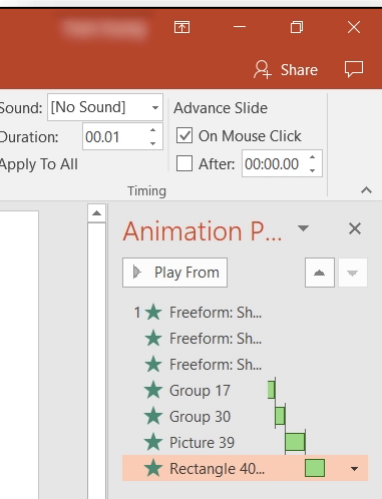


4. Change the duration for all three animations to 3.00 seconds

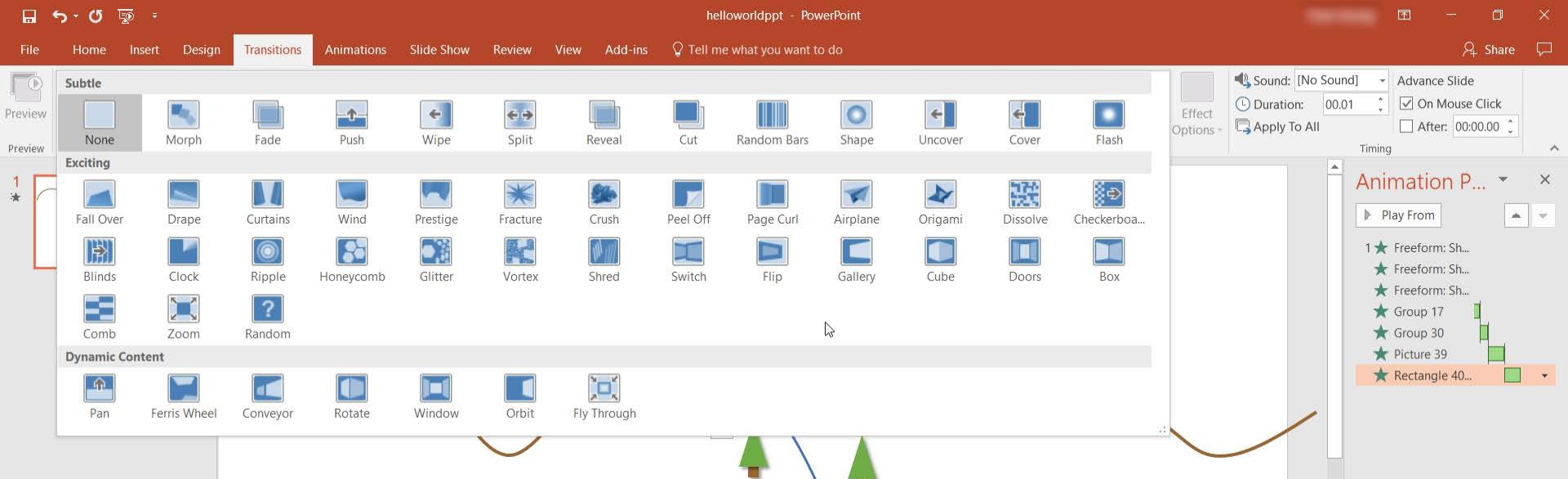
Changing this setting makes the animations last longer, emphasizing the "drawn on" effect.



1. Add animations to the rest of the objects on the slide
2. In the animation pane, change all start cues to "After Previous"
3. Change the durations to whatever you like



The green bars in the animation pane visually represent the order and duration in which the animations will occur.

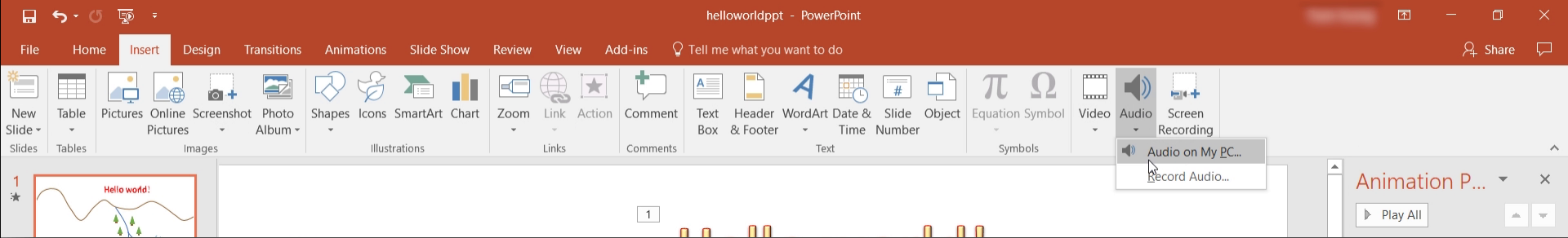


1. Select the Transitions tab
2. Apply the Fade Transition

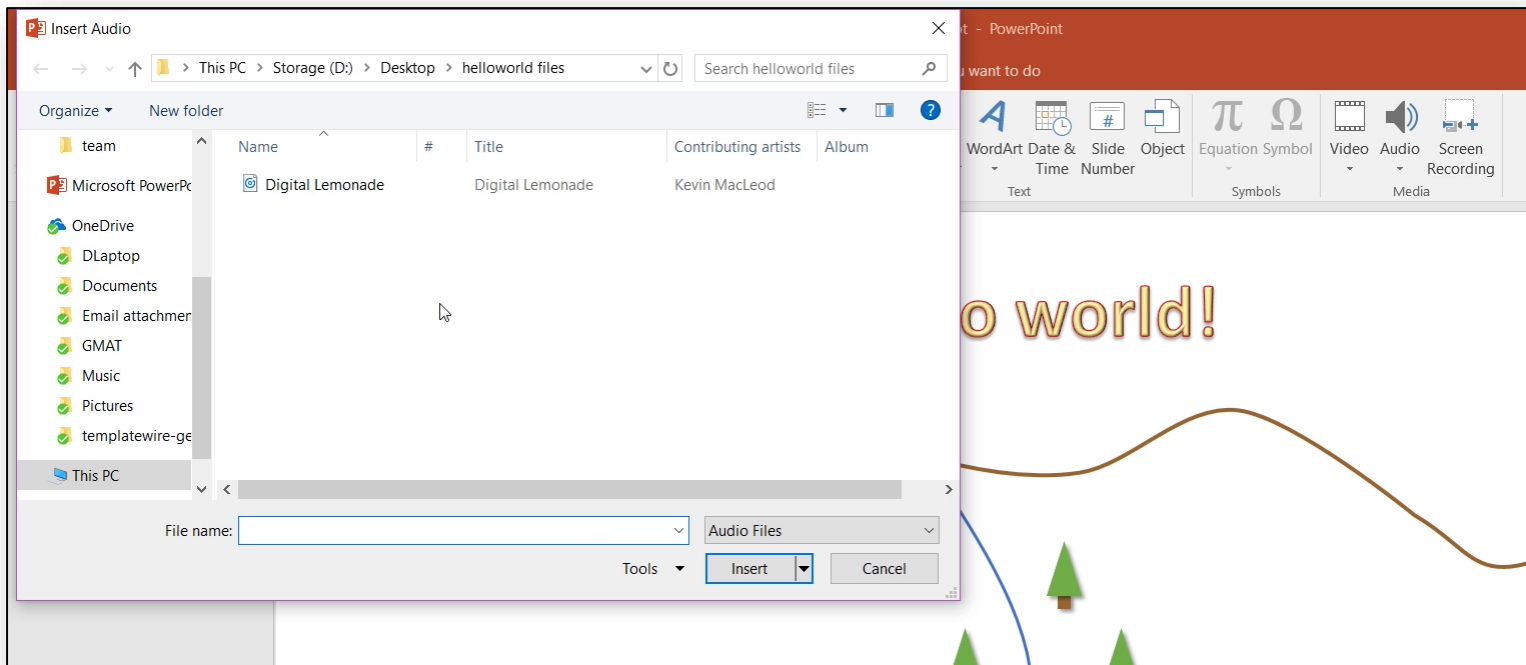
There are many transitions to choose from, much like the animations gallery.

Transitions happen **TO** the current slide, not **AWAY** from the current slide.

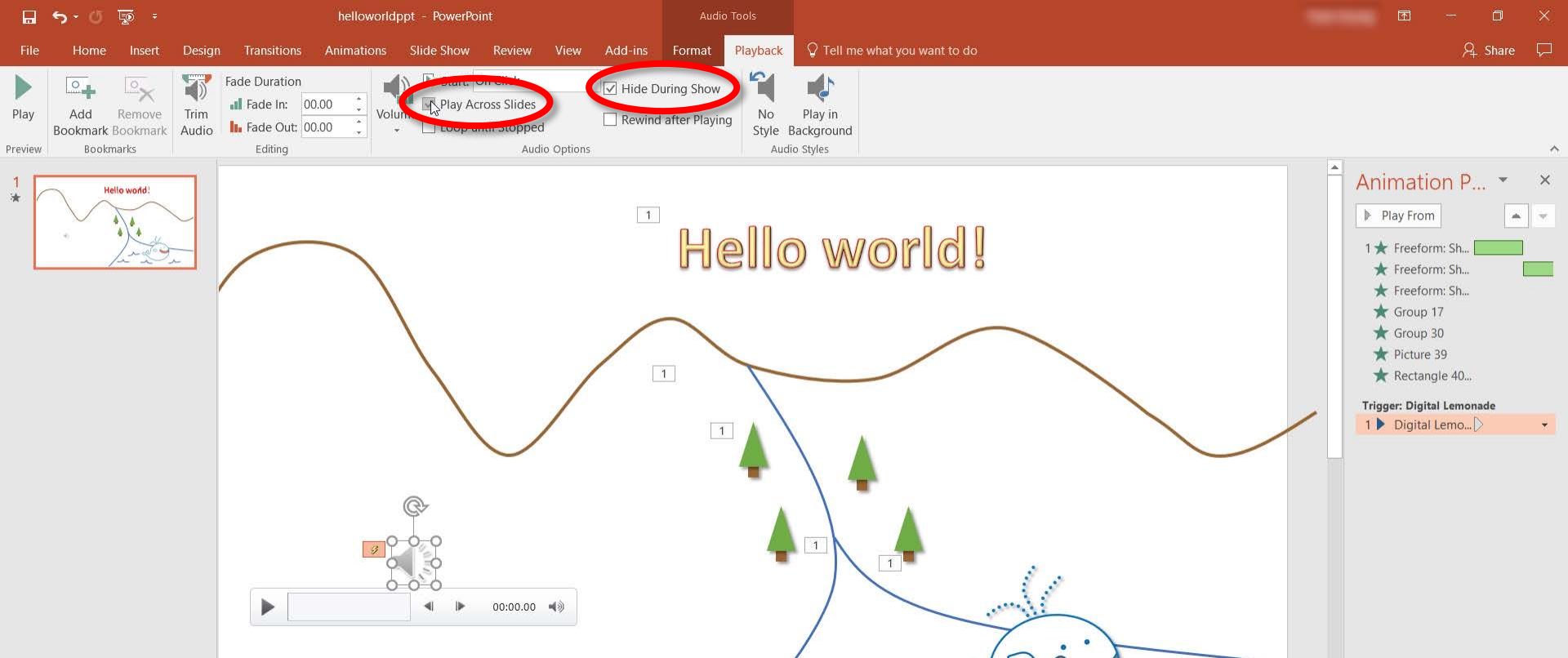




1. Go to the Insert tab, then choose Audio
2. Choose "Audio on My PC" to browse for a file

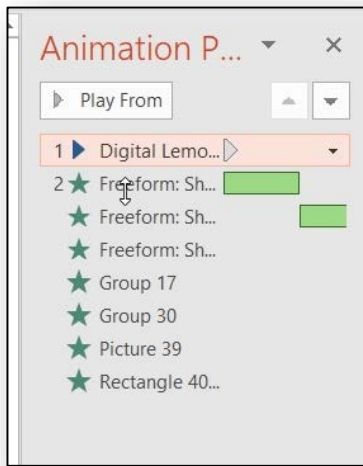


3. Select the audio file you want to include in your animation

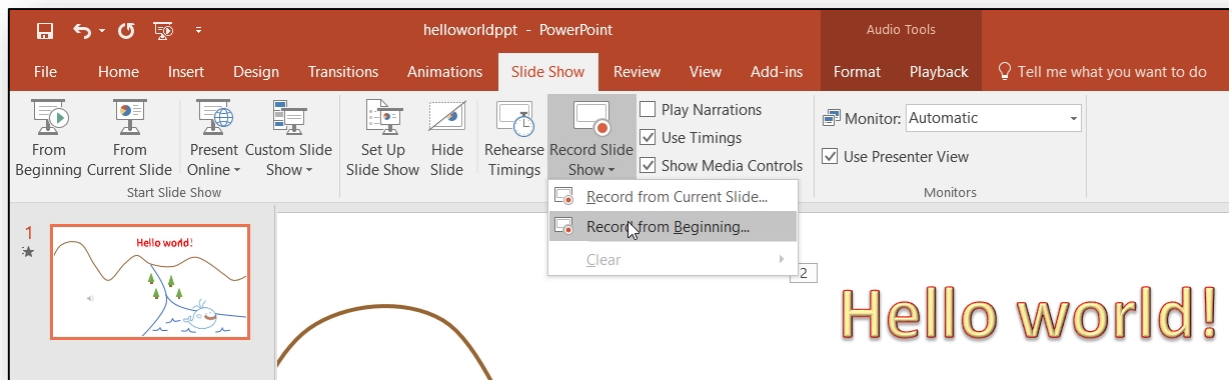


1. Click the audio icon to bring up the Audio Tools tab at the top
2. Check the boxes "Hide During Show" and "Play Across Slides"

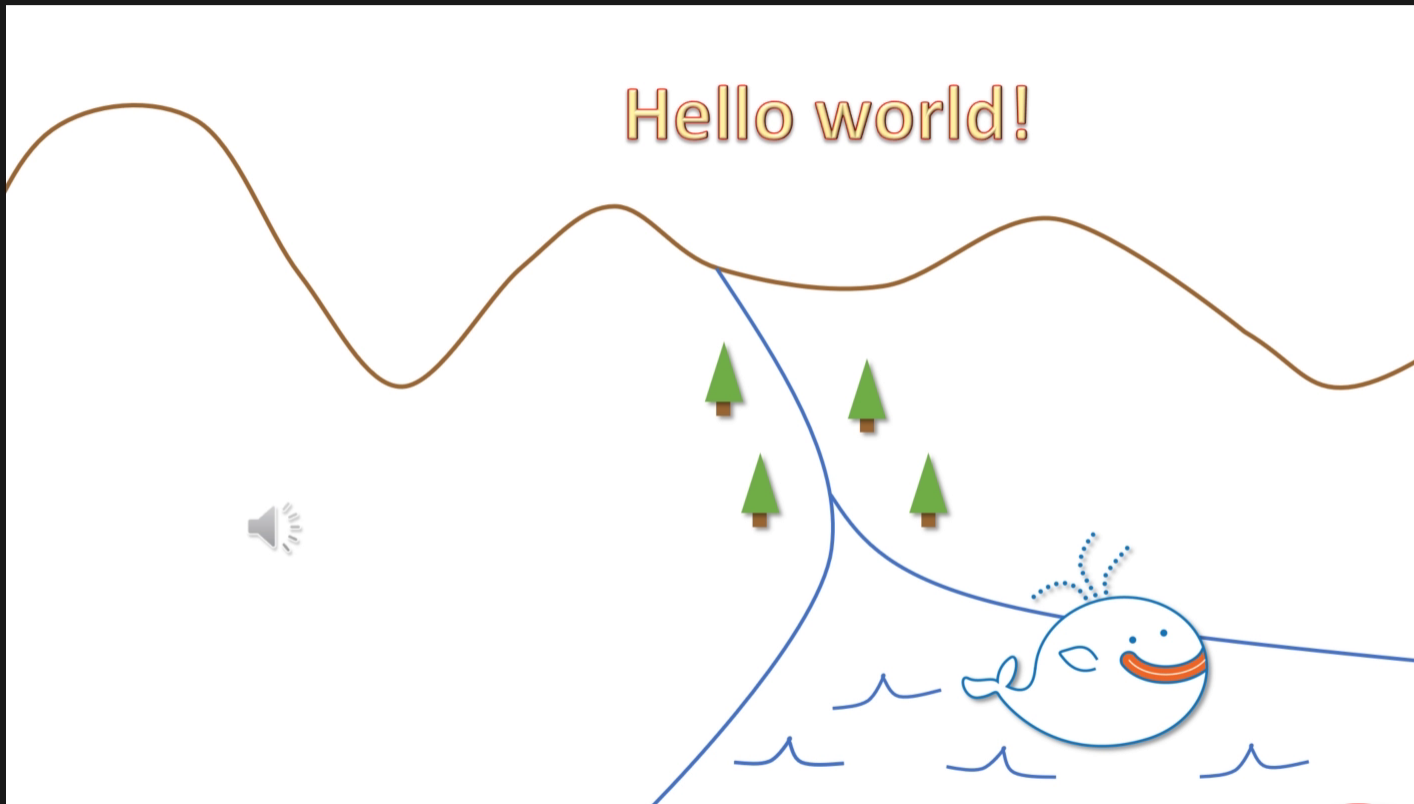
Checking these boxes will hide the icon when the slideshow is playing and make sure the audio doesn't stop playing when a new slide starts.



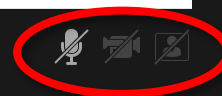
1. Open the Animation Pane
2. Move your audio file to the top of the list to make sure it plays before your animations start



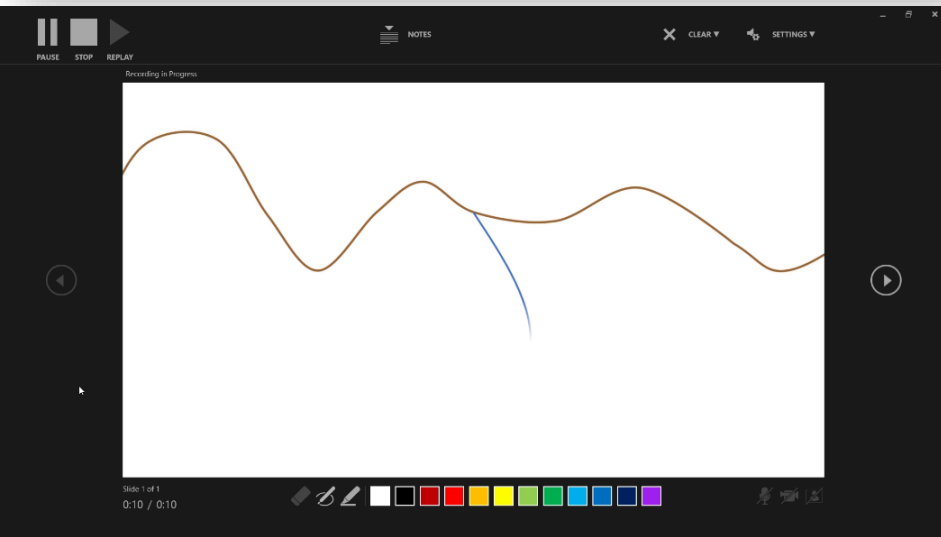
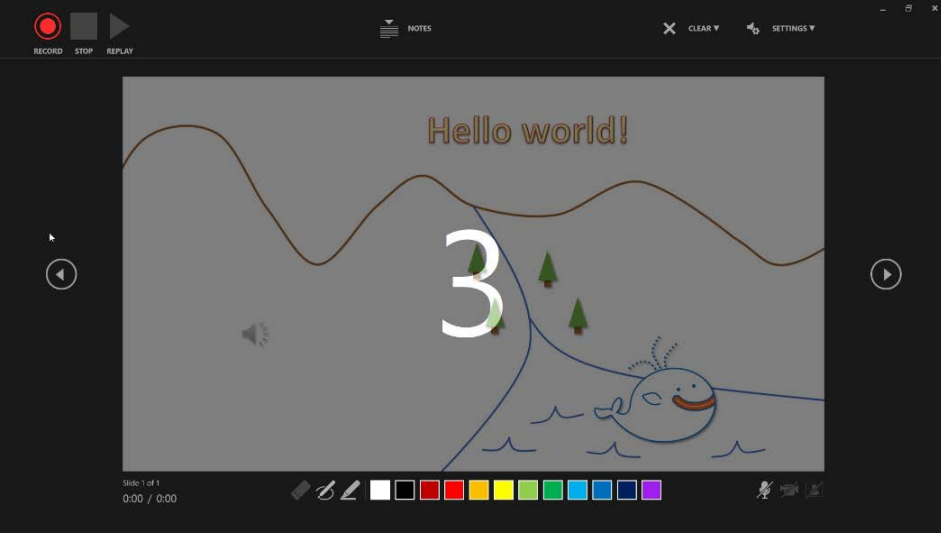
3. Go back to the Slide Show tab
4. Make sure "Play Narrations" is unchecked
5. Choose Record Slide Show > Record from Beginning



Slide 1 of 1  
0:00 / 0:00

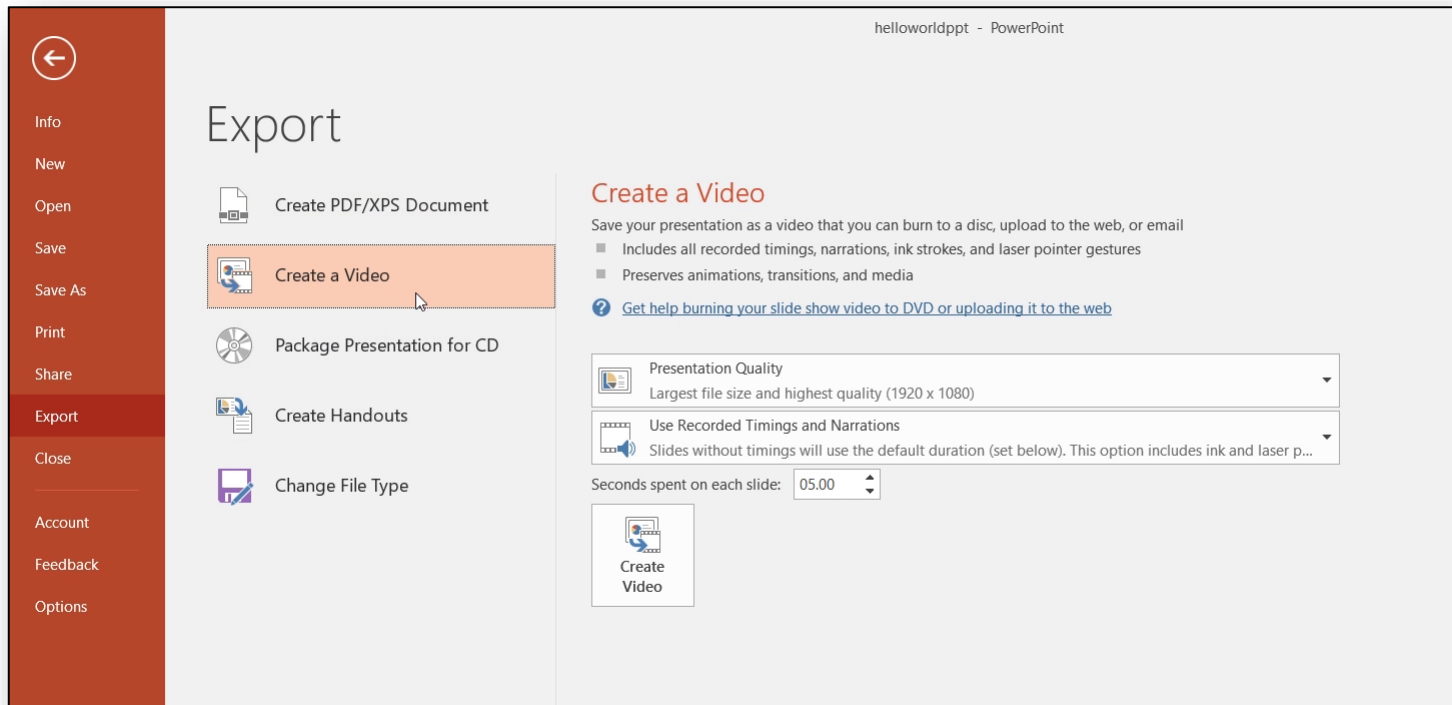


This is the recording screen. Make sure your camera and microphone are turned off, unless you want to record narrations.

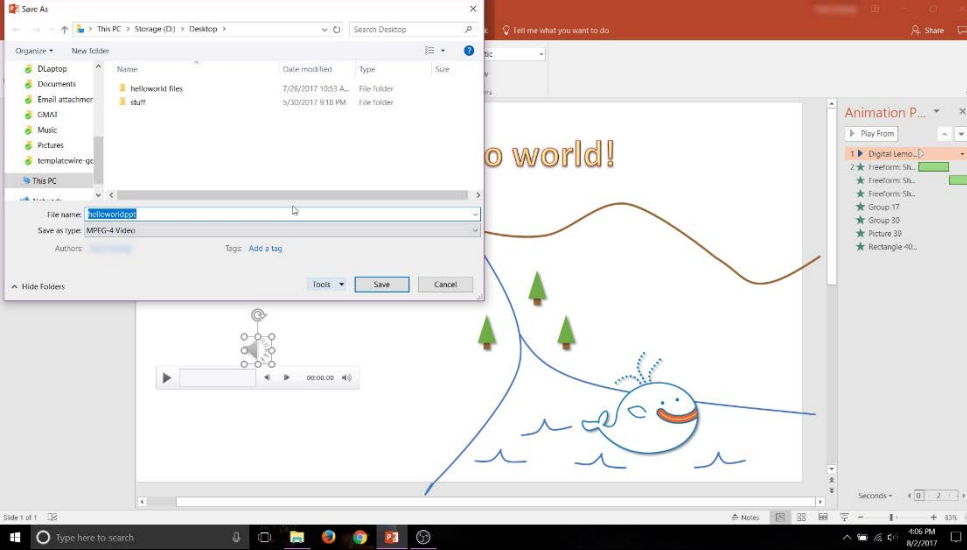


1. Hit the record button and wait for the countdown to finish
2. Hit space bar to start your audio
3. Hit space bar again to start your animation
4. Hit the stop button to end the recording
5. Press Escape to exit this screen

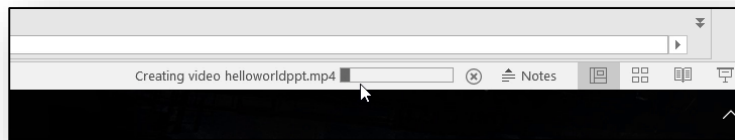
If you set up all your animations to start "After Previous", the rest of your animation should play automatically!



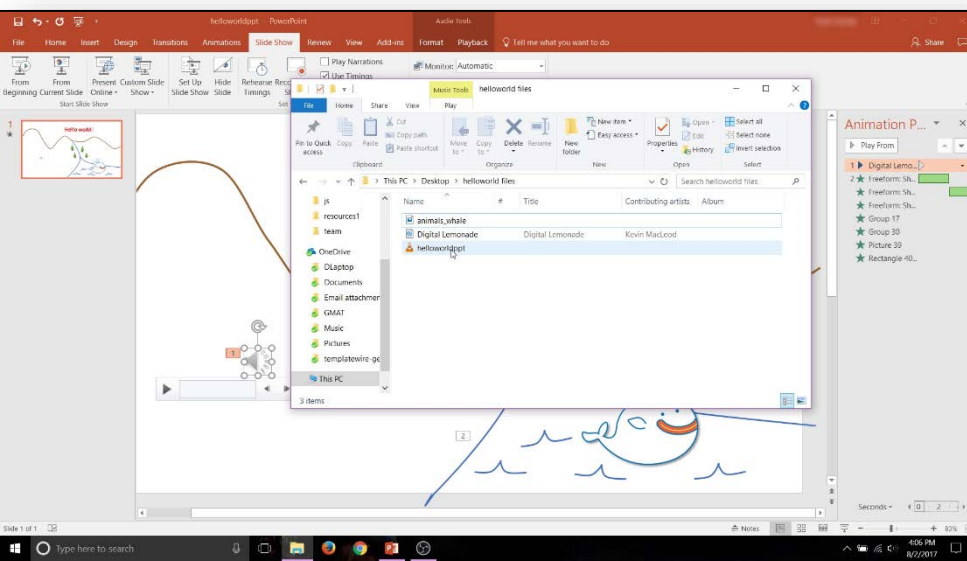
1. Go to File > Export > Create A Video
2. Choose "Presentation Quality" for highest quality
3. Choose "Use Recorded Timings and Narrations" to use the recording you just made
4. Click "Create Video"



1. Choose your save location



2. Wait for the loading bar to finish



3. Find your finished video!