
COMP 322 / ELEC 323:
Fundamentals of
Parallel Programming
Lecture 1: Task Creation & Termination
(async, finish)

Instructors: Mack Joyner, Zoran Budimlić
Department of Computer Science, Rice University
{mjoyner, zoran}@rice.edu

<http://comp322.rice.edu>



Special thanks to Vivek Sarkar!



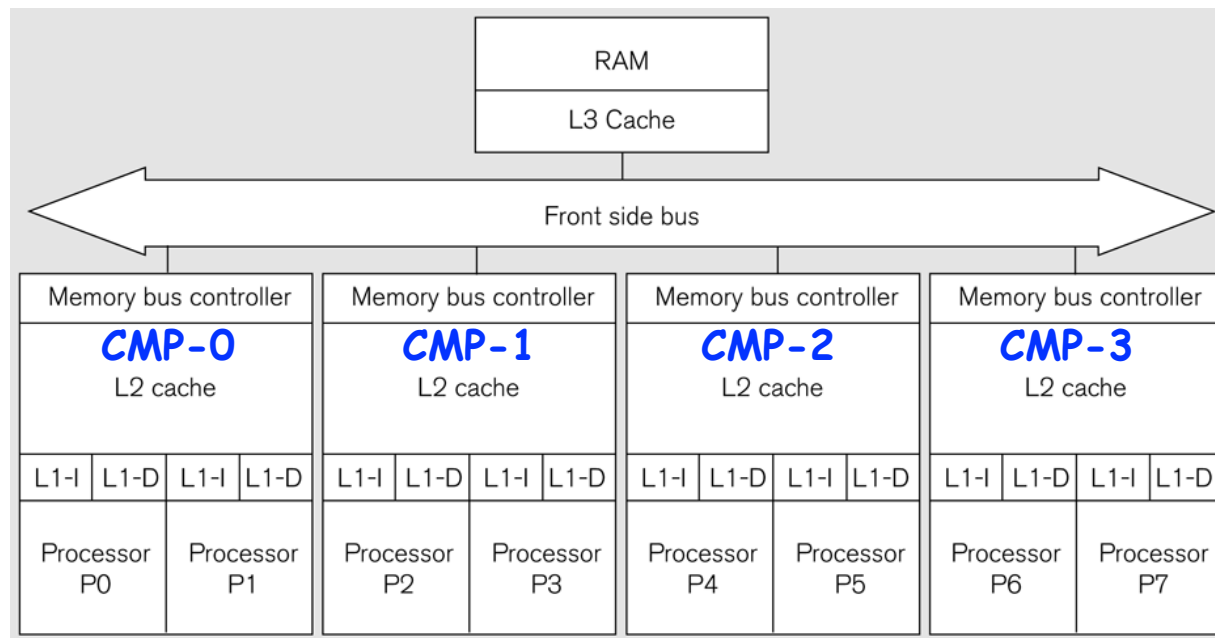
Your Teaching Staff!

- **Undergraduate TAs**
 - Abbey Baker, Ashok Sankaran, Austin Bae, Avery Whitaker, Aydin Zanager, Eduard Danalache, Frank Chen, Hamza Nauman, Harrison Brown, Jahid Adam, Jeemin Sim, Kitty Cai, Madison Lewis, Ryan Han, Teju Manchenella, Victor Gonzalez, Victoria Nazari
- **Graduate TAs**
 - Jonathan Sharman, Srdjan Milakovic
- **Instructors**
 - Mack Joyner, Zoran Budimlić



What is Parallel Computing?

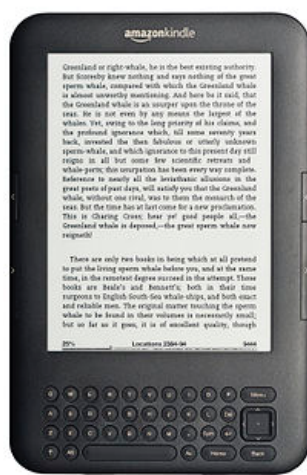
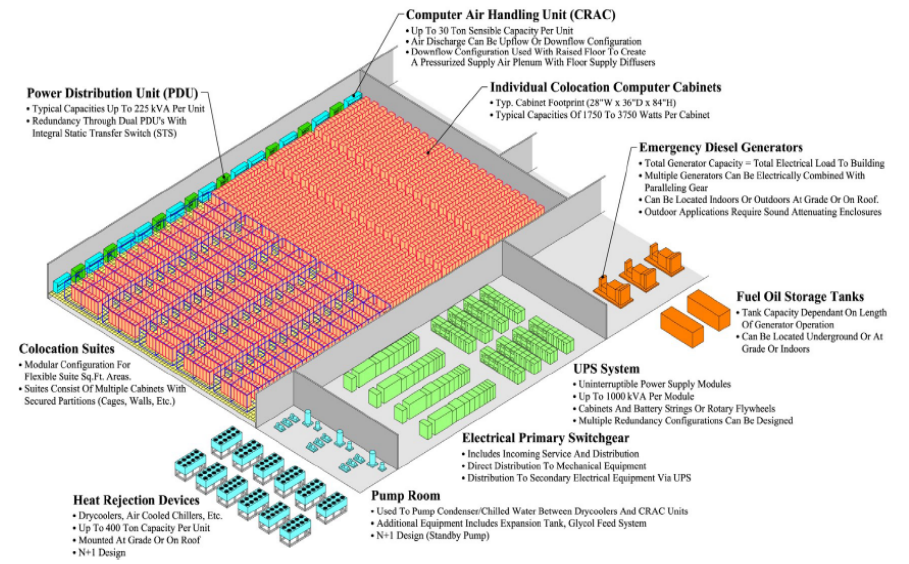
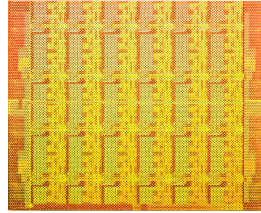
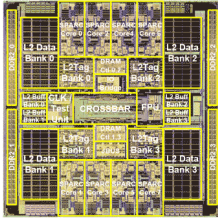
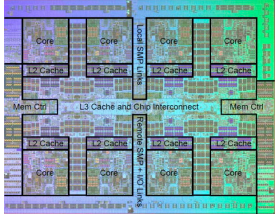
- **Parallel computing:** using multiple processors in parallel to solve problems more quickly than with a single processor and/or with less energy
- Example of a parallel computer
 - An 8-core Symmetric Multi-Processor (SMP) consisting of four dual-core chip microprocessors (CMPs)



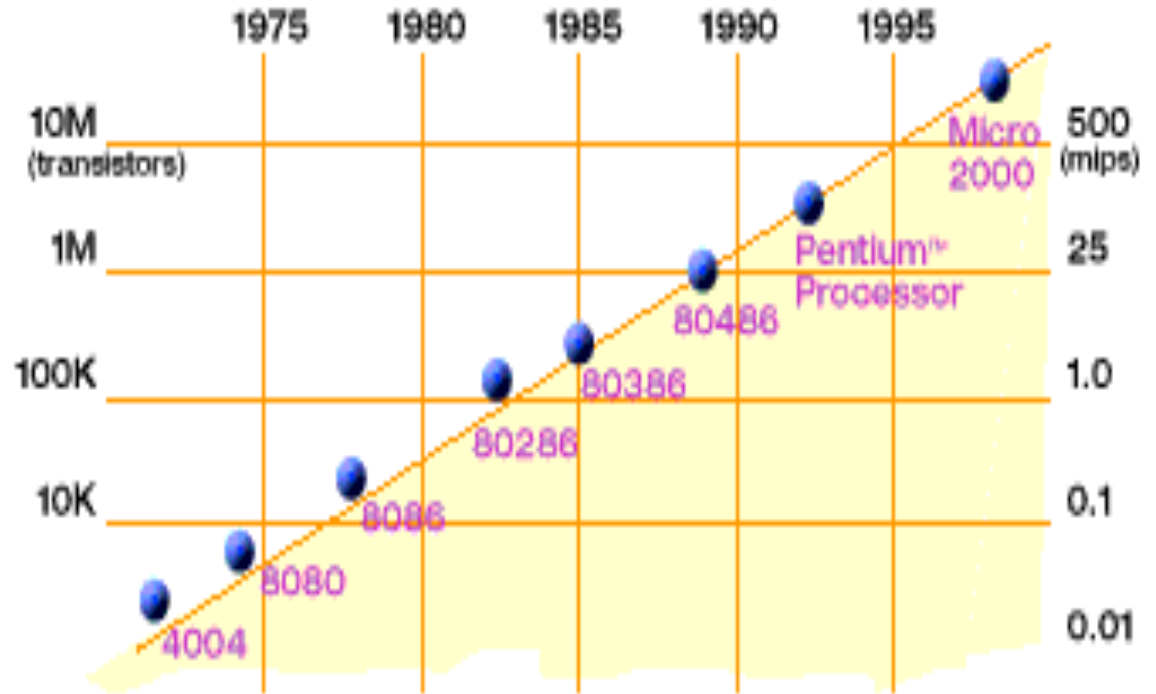
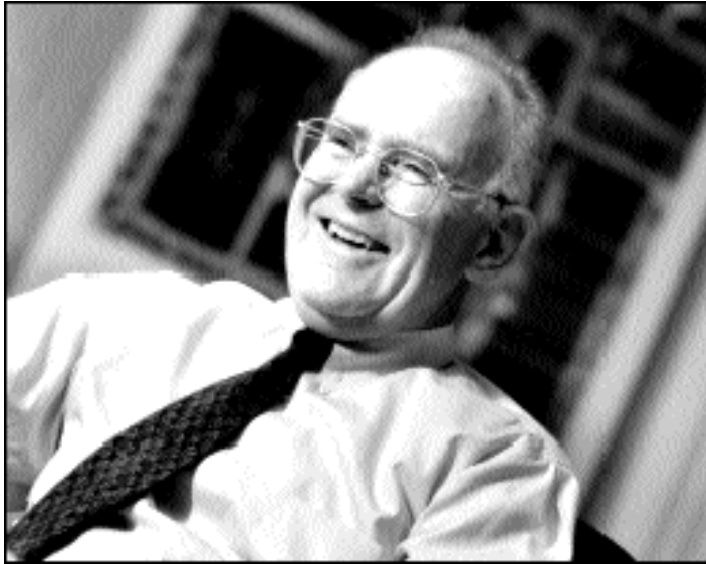
Source: Figure 1.5 of Lin & Snyder book, Addison-Wesley, 2009



All Computers are Parallel Computers --- Why?



Moore's Law and Dennard Scaling



Gordon Moore (co-founder of Intel) predicted in 1965 that the transistor density of semiconductor chips would double roughly every 1-2 years (Moore's Law)

- ⇒ area of transistor halves every 1-2 years
- ⇒ feature size reduces by $\sqrt{2}$ every 1-2 years

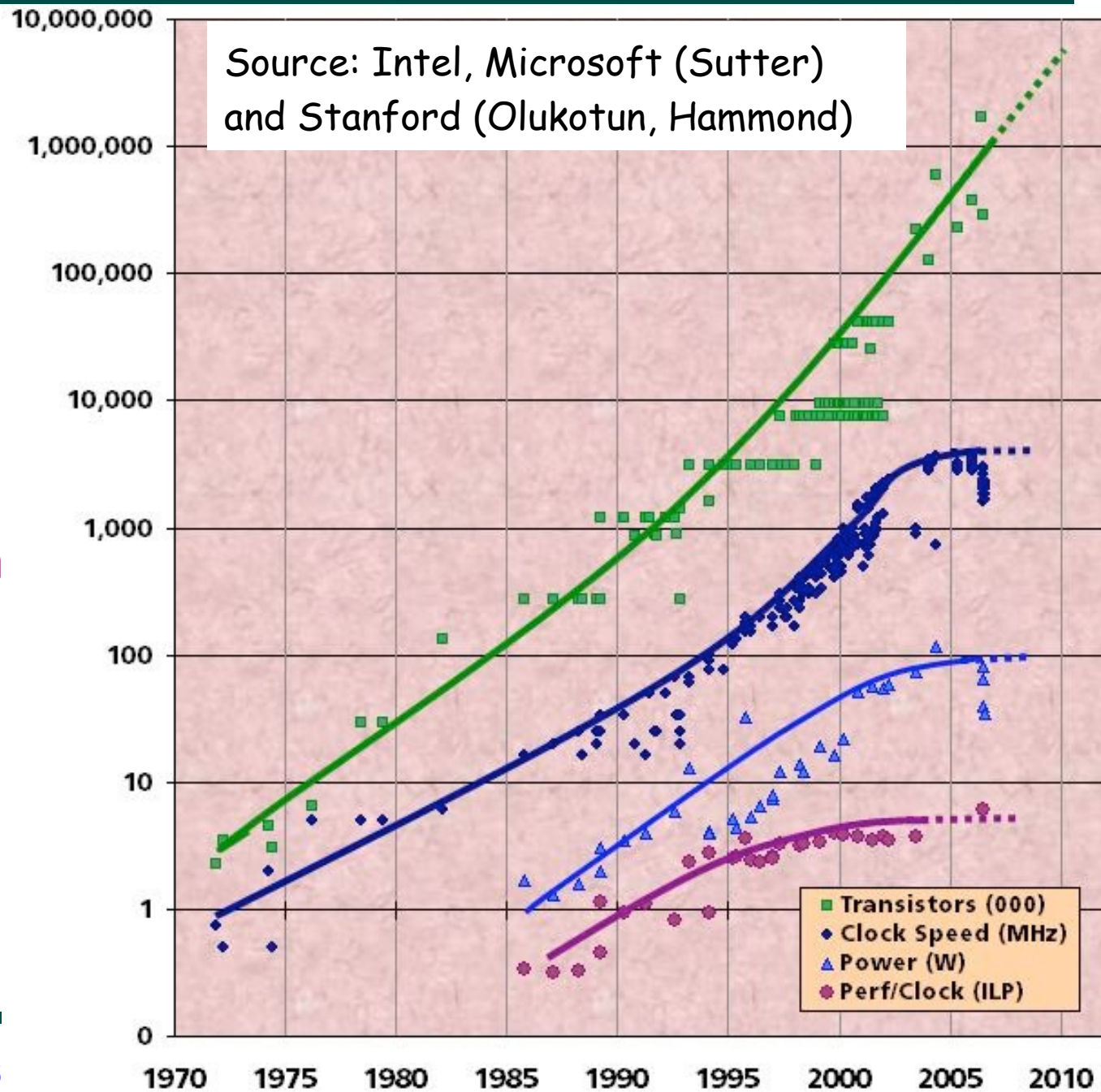
Slide source: Jack Dongarra

Dennard Scaling states that power for a fixed chip area remains constant as transistors grow smaller



Recent Technology Trends

- **Chip density (transistors)** is increasing $\sim 2x$ every 2 years
- \Rightarrow number of processors doubles every 2 years as well
- **Clock speed** is plateauing below 10 GHz so that **chip power** stays below 100W
- **Instruction-level parallelism (ILP)** in hardware has also plateaued below 10 instructions/cycle
- \Rightarrow **Parallelism must be managed by software!**



Parallelism Saves Power (Simplified Analysis)

Nowadays (post Dennard Scaling), Power \sim (Capacitance) * (Voltage)² * (Frequency)
and maximum Frequency is capped by Voltage

→ Power is proportional to (Frequency)³

Baseline example: single 1GHz core with power P

Option A: Increase clock frequency to 2GHz → Power = 8P

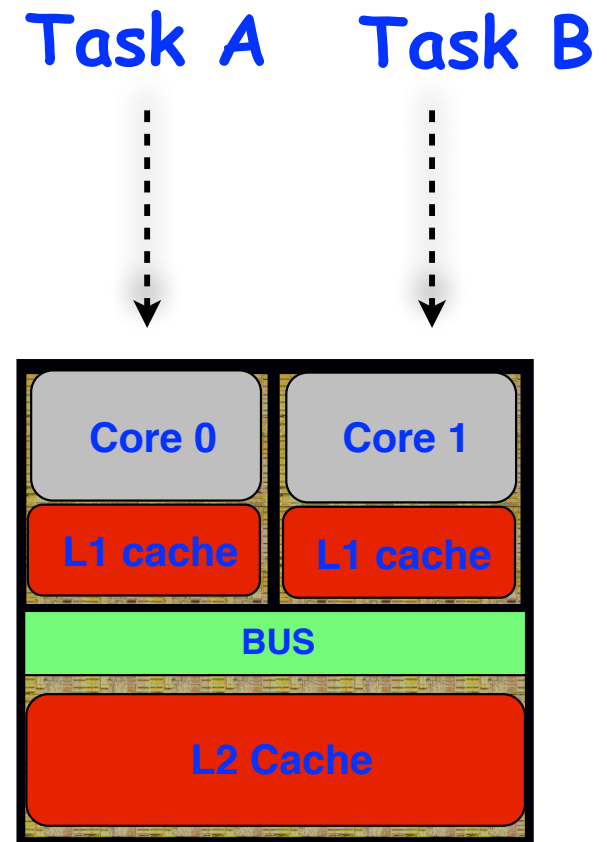
Option B: Use 2 cores at 1 GHz each → Power = 2P

- Option B delivers same performance as Option A with 4x less power ... provided software can be decomposed to run in parallel!



What is Parallel Programming?

- Specification of operations that can be executed in parallel
- A parallel program is decomposed into sequential subcomputations called *tasks*
- Parallel programming constructs define task creation, termination, and interaction



Schematic of a dual-core Processor



Example of a Sequential Program: Computing the sum of array elements

Algorithm 1: Sequential ArraySum

Input: Array of numbers, X .

Output: sum = sum of elements in array X .

$sum \leftarrow 0$;

for $i \leftarrow 0$ **to** $X.length - 1$ **do**

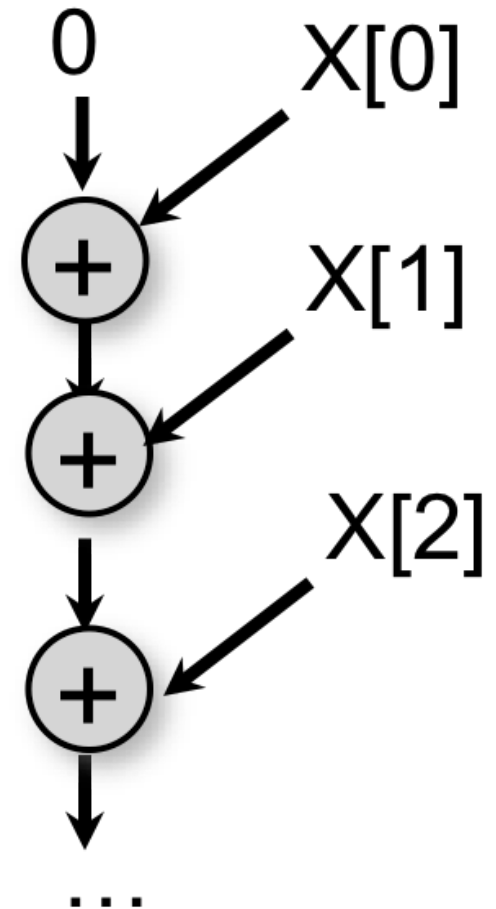
$sum \leftarrow sum + X[i]$;

return sum ;

Observations:

- The decision to sum up the elements from left to right was arbitrary
- The computation graph shows that all operations must be executed sequentially

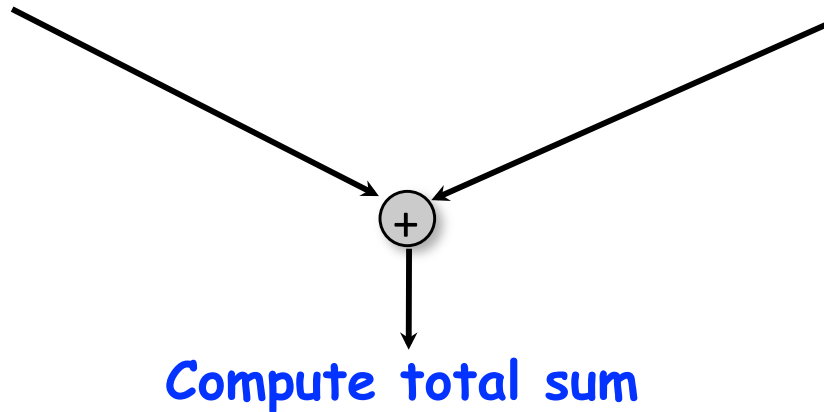
Computation Graph



Parallelization Strategy for two cores (Two-way Parallel Array Sum)

Task 0: Compute sum of
lower half of array

Task 1: Compute sum of
upper half of array



Basic idea:

- Decompose problem into two tasks for partial sums
- Combine results to obtain final answer
- Parallel divide-and-conquer pattern



Async and Finish Statements for Task Creation and Termination (Pseudocode)

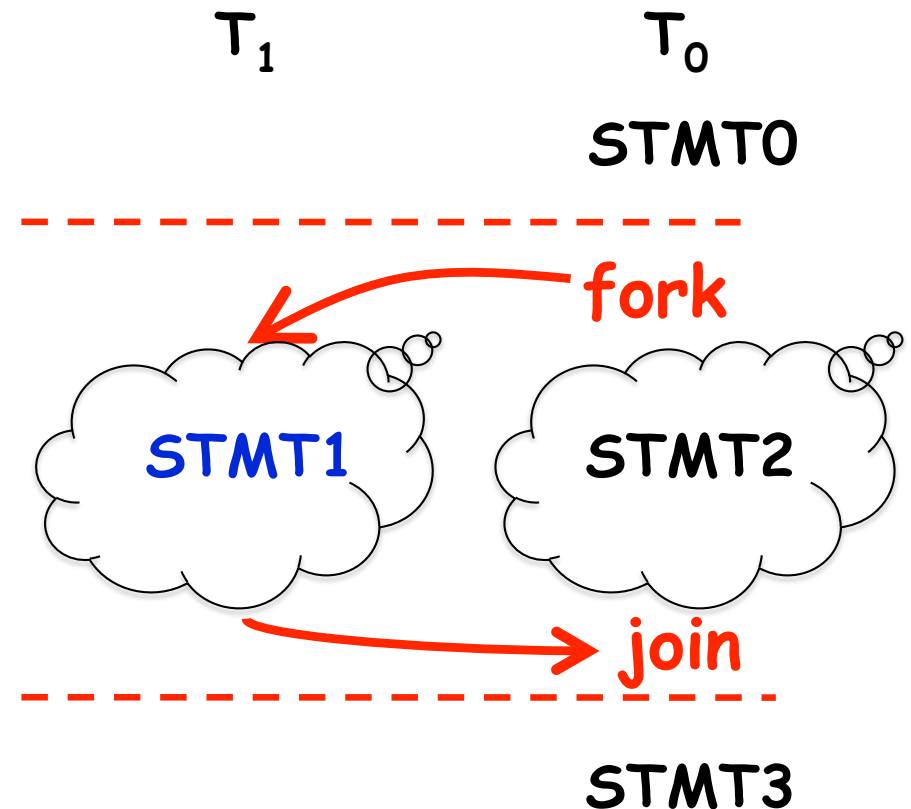
async S

- Creates a new child task that executes statement S

```
// T0 (Parent task)
STMT0;
finish { //Begin finish
  async {
    STMT1; //T1 (Child task)
  }
  STMT2; //Continue in T0
          //Wait for T1
} //End finish
STMT3; //Continue in T0
```

finish S

- Execute S, but wait until *all* asyncs in S's scope have terminated.



Two-way Parallel Array Sum using `async` & `finish` constructs

Algorithm 2: Two-way Parallel ArraySum

Input: Array of numbers, X .

Output: $sum = \text{sum of elements in array } X$.

// Start of Task T1 (main program)

$sum1 \leftarrow 0$; $sum2 \leftarrow 0$;

// Compute $sum1$ (lower half) and $sum2$ (upper half) in parallel.

`finish`{

`async`{

 // Task T2

 for $i \leftarrow 0$ to $X.length/2 - 1$ do

$sum1 \leftarrow sum1 + X[i]$;

 };

`async`{

 // Task T3

 for $i \leftarrow X.length/2$ to $X.length - 1$ do

$sum2 \leftarrow sum2 + X[i]$;

 };

};

// Task T1 waits for Tasks T2 and T3 to complete

// Continuation of Task T1

$sum \leftarrow sum1 + sum2$;

`return` sum ;



Course Syllabus

- **Fundamentals of Parallel Programming taught in three modules**
 1. **Parallelism**
 2. **Concurrency**
 3. **Locality & Distribution**
- **Each module is subdivided into units, and each unit into topics**
- **Lecture and lecture handouts will introduce concepts using pseudocode notations**
- **Labs and programming assignments will be in Java 8**
 - Initially, we will use the Habanero-Java (HJ) library developed at Rice as a pedagogic parallel programming model
 - HJ-lib is a Java 8 library (no special compiler support needed)
 - HJ-lib contains many features that are easier to use than standard Java threads/tasks, and are also being added to future parallel programming models
 - Later, we will learn parallel programming using standard Java libraries, and combinations of Java libs + HJ-lib



Grade Policies

Course Rubric

- **Homeworks (5) 40%** (written + programming components)
 - **Weightage proportional to # weeks for homework**
- **Exams (2) 40%** (scheduled midterm + scheduled final)
- **Labs 10%** (labs need to be checked off by Monday)
- **Quizzes 5%** (on-line quizzes on Canvas)
- **Class Participation 5%** (in-class worksheets)



Next Steps

- **IMPORTANT:**
 - Bring your laptop to this week's lab at 4pm on Thursday (SEW 301)
 - Watch videos for topics 1.2 & 1.3 for next lecture on Wednesday
- HW1 will be assigned on Jan 10th and be due on Jan 24th. (Homework is normally due on Wednesdays.)
- Each quiz (to be taken online on Canvas) will be due on the Friday after the unit is covered in class. The first quiz for Unit 1 (topics 1.1 - 1.5) is due by Jan 26.
- See course web site for syllabus, work assignments, due dates, ...
 - <http://comp322.rice.edu>



OFFICE HOURS

- Regular office hour schedule can be found at Office Hours link on course web site
- This week's office hours are Tu/W 4pm - 5pm, Duncan Hall 2071
- Send email to instructors (mjoyner@rice.edu, zoran@rice.edu) if you need to meet some other time this week
- And remember to post questions on Piazza!

