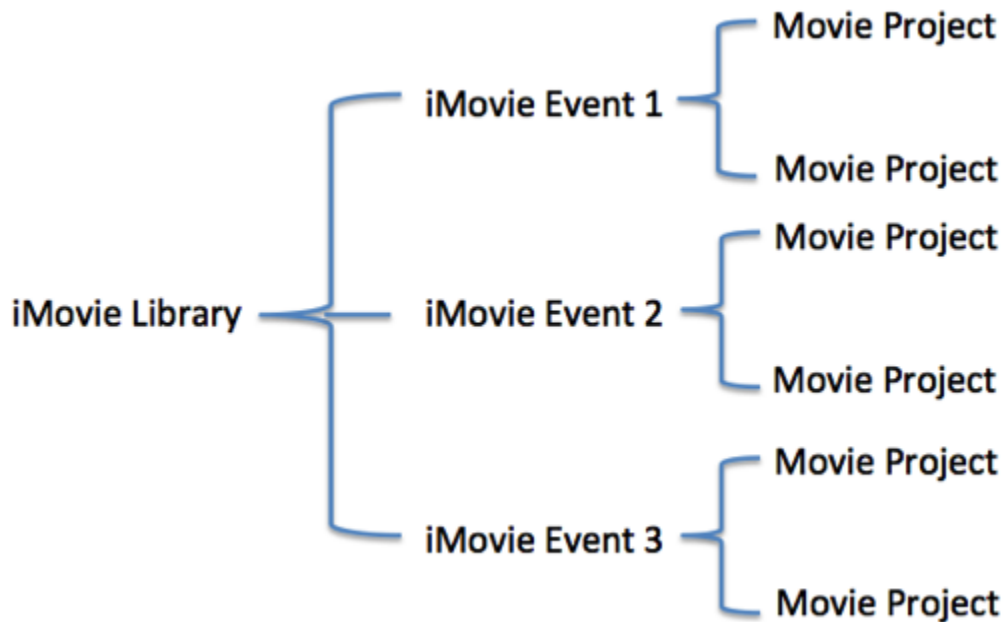


# DMC Software: iMovie - How to Back Up Your iMovie Files

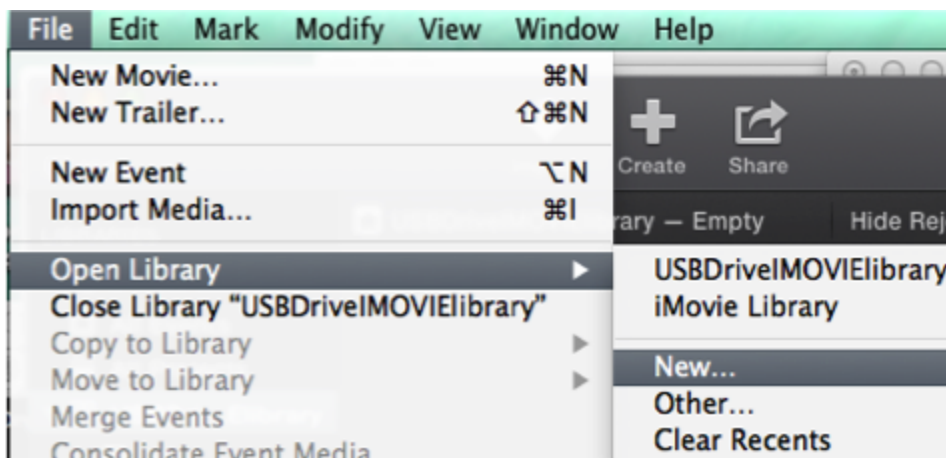
To back up your files, you need to understand iMovie file structure first:

All your movie projects should reside in an iMovie Event that is within an iMovie Library. By default, your iMovie Library is located on your hard drive > HOME > Movies > iMovie Library.

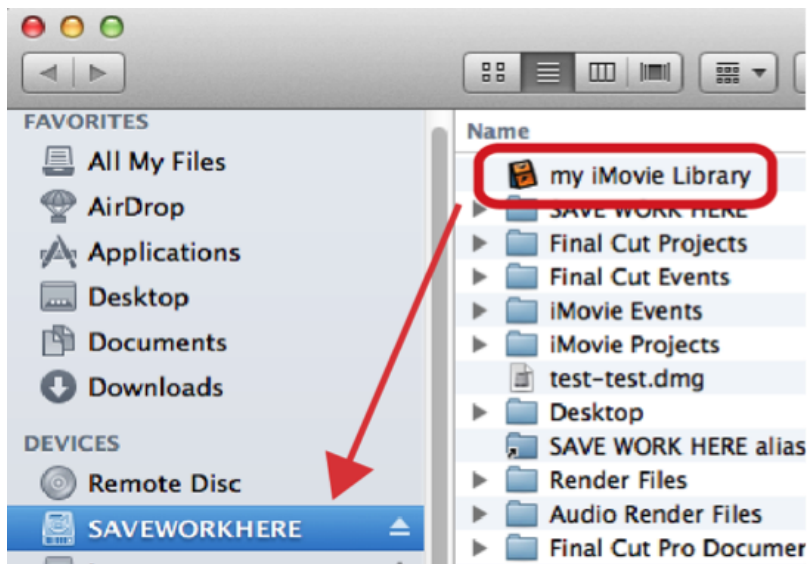


If you start an iMovie project at the DMC, it is required to save your library to **SAVEWORKHERE** drive. It is the same way when you save your iMovie library to an external drive. To do so:

- 1) Connect your external drive to the computer
- 2) Open iMovie
- 3) Go to **File>Open Library>New...** to create a new library



- 4) Make sure to select your external drive on the left navigation bar if it is connected or **SAVEWORKHERE** drive on DMC computers.
- 5) You should see an iMovie library created in your external drive or DMC SAVEWORKHERE drive.



*NOTE: If you don't remember where you saved your library, event, or project, you can simply click on the clip in the browser pane, go to top menu, click on **File > Reveal in Finder** to locate all your media, or media library. Then you can drag your library to your drive to back up.*