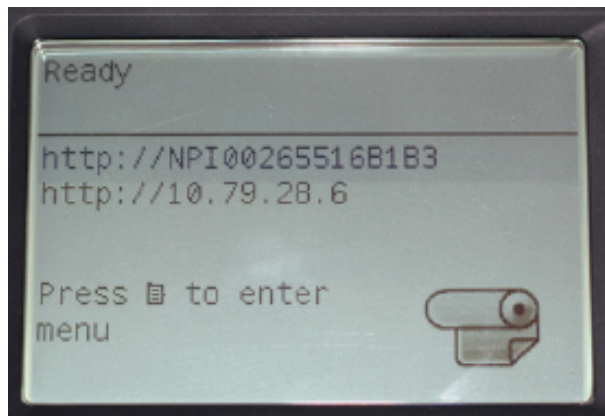


Loading Paper In To the Plotter

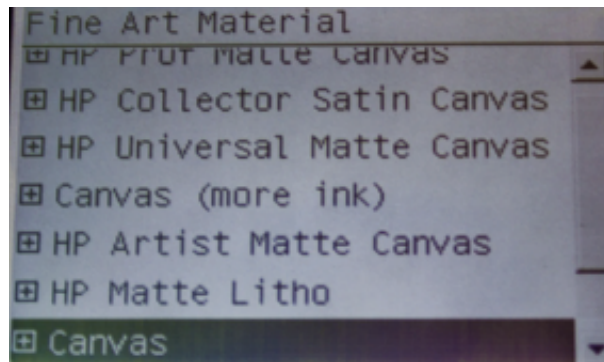
<div data-bbox="146 216 745 659" data-label="Image"> </div>	<div data-bbox="784 216 1383 705" data-label="Image"> </div>	<div data-bbox="1422 216 1497 537" data-label="Image"> </div>
<div data-bbox="134 737 441 783" data-label="Text"> <p>1. Make sure the plotter is at the "Ready for paper" screen.</p> </div>	<div data-bbox="774 737 1180 875" data-label="Text"> <p>2. Gently push the paper roll into the grooves until you hear a click sound. The spindle lock lever will click lock the spindle in place. Make sure the paper edge comes up from the top of the roll and the blue roller lock must be on the left.</p> </div>	<div data-bbox="1414 737 1497 806" data-label="Text"> <p>3. Push t sure "Pa push "O</p> </div>
<div data-bbox="134 896 735 1543" data-label="Image"> </div>	<div data-bbox="779 896 1373 1428" data-label="Image"> </div>	<div data-bbox="1414 896 1497 1436" data-label="Image"> </div>
<div data-bbox="134 1568 482 1640" data-label="Text"> <p>4. Select "Paper load", then "Load roll". The plotter will ask you to feed paper through the roller.</p> </div>	<div data-bbox="774 1568 1180 1829" data-label="Text"> <p>5. Feed the paper on the front side of the roller and up into the printer. Make sure that you are not rolling the paper only around the black spool, but in the diagonally angled grey metal slot. Gently push the paper until you hear a beep sound AND feel the paper is slowly getting pulled by the plotter. DO NOT lift the blue lever and try to force feeding the paper, since the plotter auto-load the paper itself after it detects the paper.</p> </div>	<div data-bbox="1414 1568 1497 1757" data-label="Text"> <p>6. If plott paper, it top figur press O the bottc After this feed pap -- refer s</p> </div>



7. If semi-glossy paper with media tracking information (barcode) is loaded properly, you don't need to select paper category and roll length, as the plotter scans the barcode and selects paper profile for you.

If paper is aligned, the plotter should be at Ready screen. You are now ready to print.

If paper is misaligned, refer to step 10-12

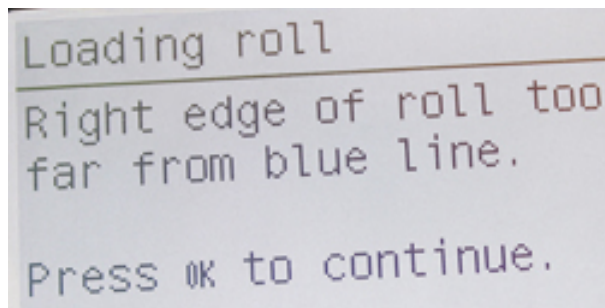


8. If canvas matte paper is being loaded, you will need to manually select the paper type. For our standard canvas material, select "Fine Art Material" then scroll down to "Canvas". Roll length should be Unknown. You need to advance canvas after loading. Refer Tips and Tricks on top of this page for instruction.

Note the plotter cannot cut the canvas, so it cannot print media tracking information on canvas roll. Therefore paper type and length cannot be determined by the plotter, we have to manually select this info.



9. If you paper wi (barcode the pape material "HP Univ for medi

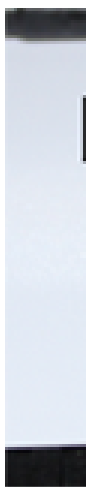


10. If paper is misaligned, you will see above message. Follow the menu, press OK button on the plotter to continue.



11. Follow the menu, open the window, lift blue lever to align right edge of paper with blue line.

If you see the message shown in step 6 asking you to remove the paper, simply follow the menu, then re-feed the paper.



12. Adju: aligned v lower the then foll the pape